

Chicago Flameproof and Wood Specialties Corp., dba Flameproof Companies

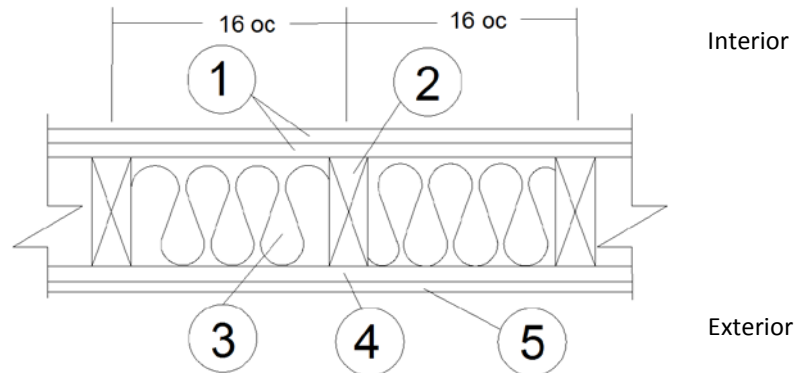
Design No. CF/WPPS 120-02

MagTech™ Fire Retardant Sheathing

ASTM E119

Rating: 2 Hour From Interior, 1 Hour From Exterior

Load Bearing 100% Design Load (2015 NDS)



1. GYPSUM BOARD (Interior): USG Firecode® C Core, complying with ASTM C1396, or equivalent, min. 5/8 in. thick, 4 ft. wide applied vertically, fastened to framing. Two layers required for 2 hour rating from the interior. One layer required for 1 hour rating from the exterior. Face layer joints staggered with base layer. All joints covered with paper tape and joint compound.

- A. FACE LAYER (Required for 2 Hour Rating from Interior) – Min. #6 × 2 in. long Type S or W screws spaced max. 8 in. oc and heads covered with joint compound.
- B. BASE LAYER (Required for 2 Hour Rating from Interior and 1 Hour from Exterior) – Min. #6 × 1-5/8 in. long Type S or W screws, spaced max. 6 in. oc.

2. FRAMING: Min. 2×4 in. nominal wood studs spaced 16 in. oc, or 2×6 in. nominal wood studs spaced 24 in. oc, double top plates and single bottom plate fastened together with 16d common nails (3-1/2 in.×0.162 in.), 16d box nails (3-1/2 in.×0.135 in.), or 12d ring nails (3-1/4 in.×0.135 in.).

3. INSULATION: Faced or unfaced mineral fiber insulation min. 3-1/2 in. thick (2.8 pcf, nominal) or fiberglass batt insulation min. 3-1/2 in. thick R-13 friction fit between the studs. If 2×6 in. nominal

wood studs are used, fiberglass batt insulation shall be min. 5-1/2 in. thick.

4. SHEATHING (Exterior):

- A. CERTIFIED PRODUCT – MagTech™ fire retardant sheathing for a fire-resistive wood-frame wall assembly, min. 7/16 in. thick wood structural sheathing laminated with min. 3mm thick fiber reinforced magnesium oxide board on each side.
- B. INSTALLATION – MagTech™ is applied vertically over the specified framing with min. 2-3/8 in. long, 0.113 in. diameter nails, spaced max. 8 in. oc around the perimeter and max. 12 in. oc in the field. Horizontal joints must be blocked.
- C. CERTIFIED MANUFACTURER – Chicago Flameproof and Wood Specialties Corp., dba Flameproof Companies.

5. EXTERIOR FACINGS (Optional for 2 Hour Rating from Interior): Materials installed in accordance with manufacturer's installation instructions:

- Min. 5/16 in. thickness fiber-cement siding complying with ASTM C1186, installed in accordance with approved manufacturer's instructions
- Brick min. thickness of 2-5/8 in. complying with ASTM C216
- Cement plaster (stucco) min. thickness 3/4 in. on metal lath according to ASTM C926