

**Fire Retardant Chemical Technologies LLC**

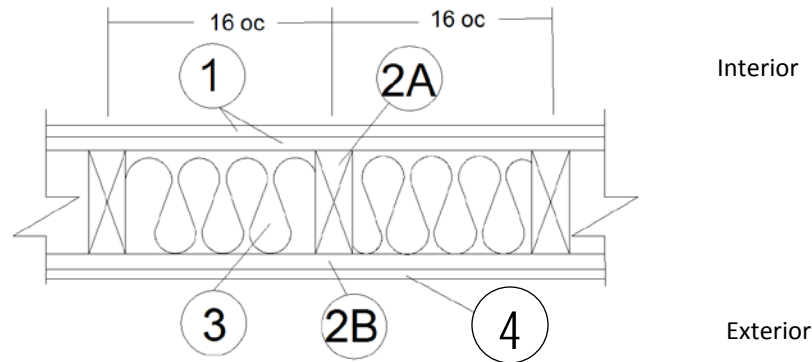
**Design No. FRCT/FRWT 120-03**

**Fire Retardant Wood**

**FlameTech™ Lumber and Plywood**

**ASTM E119**

**Rating: 2 Hour Load Bearing from the Interior and 1 Hour Load Bearing from the Exterior  
(2015 NDS - F<sub>c</sub> 0.96 for FRWT)**



**1. GYPSUM BOARD (Interior):** Two layers USG Firecode® C Core, complying with ASTM C1396, or equivalent, min. 5/8 in. thick, 4 ft. wide applied vertically, fastened to framing. Face layer joints staggered with base layer and covered with paper tape and joint compound.

**FASTENERS (Not Shown):**

- A. FACE LAYER – Min. #6 × 2 in. long Type S or W screws spaced max. 8 in. on center (oc) and heads covered with joint compound.
- B. BASE LAYER – Min. #6 × 1-5/8 in. long Type S or W screws, spaced max. 6 in. oc.

**2. CERTIFIED MANUFACTURER:** Fire Retardant Chemical Technologies LLC.

**CERTIFIED PRODUCT:** FlameTech™

**2A. CERTIFIED MODEL:** FlameTech Lumber

FlameTech Lumber is min. 2×4 in. nominal wood studs spaced 16 in. oc, or 2×6 in. nominal wood studs spaced 24 in. oc, double top plates and single bottom plate fastened together with 16d common nails (3-1/2 in. × 0.162 in.), 16d box nails (3-1/2 in. × 0.135 in.), or 12d ring nails (3-1/4 in. × 0.135 in.).

**2B. CERTIFIED MODEL (Exterior):** FlameTech Plywood

FlameTech Plywood, min. 15/32 in. thick, applied vertically over the specified framing with min. 2-3/8 in. long, 0.113 in. diameter nails, spaced max. 8 in. oc around the perimeter and max. 12 in. oc in the field. Horizontal joints must be blocked.

**3. INSULATION:** Fiberglass Class A batt insulation min. 3-1/2 in. thick R-13 friction fit between the studs. If 2×6 in. nominal wood studs are used, fiberglass batt insulation shall be min. 5-1/2 in. thick.

**4. EXTERIOR FACINGS:** Materials installed in accordance with manufacturer’s installation instructions:

- 3/4 in. thick cement plaster (1:4 ratio of cement to sand for scratch coat and 1:5 ratio for brown coat)
- Gypsum Board Type X, complying with ASTM C1396, min 5/8-in thick, 4-ft-wide fastened to the framing. May be installed on either side of



(2B). When used fasteners for other facings must be adjusted for the additional thickness.

- Nominal 2.7 in. thick solid brick fastened using min. 22 GA wall ties
- Nominal 2.3 in. thick hollow brick fastened using min. 22 GA wall ties